

FORENSIC, LITIGATION & VALUATION SERVICES LEADERSHIP



Jim Penn
CPA, ABV
Partner-in-Charge
817.259.9120
Jim.Penn
@whitleypenn.com



Walter Bratic
CPA, CFE, CLP, CFF
Managing Director
713.403.3307
Walter.Bratic
@whitleypenn.com



Robert Allen
CFA
Managing Director
817.259.9183
Robert.Allen
@whitleypenn.com



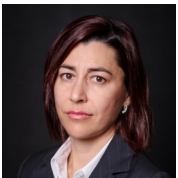
Aaron Ballard
CPA, ABV
Managing Director
817.259.9774
Aaron.Ballard
@whitleypenn.com



Justin Blok
CFE, CLP
Partner
713.403.3303
Justin.Blok
@whitleypenn.com



Jamie Burress
CPA, ABV, CFA
Managing Director
713.403.3362
Jamie.Burress
@whitleypenn.com



Emilia D'Mello
Attorney at Law,
CPA, ABV
Partner
817.259.9210
Emilia.DMello
@whitleypenn.com



Mike De Laval
Managing Director
713.403.3332
Mike.DeLaval
@whitleypenn.com



Carmen Eggleston
CPA, ABV, CFE, CFF
Managing Director
713.403.3308
Carmen.Eggleston
@whitleypenn.com



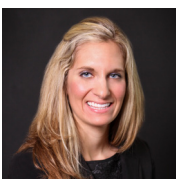
Autumn Kraus
Attorney at Law,
CPA, ABV, CMA
Partner
214.393.9448
Autumn.Kraus
@whitleypenn.com



Joshua Lynn
Managing Director
713.403.3324
Joshua.Lynn
@whitleypenn.com



Robert Metz
CPA, ABV, CFE
Partner
737.931.8224
Robert.Metz
@whitleypenn.com



Elise Padgett
CFE
Managing Director
817.259.9138
Elise.Padgett
@whitleypenn.com



Thomas Stewart
CPA, ABV, CVA, ASA,
CFF, CEIV
Partner
817.259.9183
Thomas.Stewart
@whitleypenn.com



Jack Yeager, Ph.D.
Managing Director
713.403.3301
Jack.Yeager
@whitleypenn.com